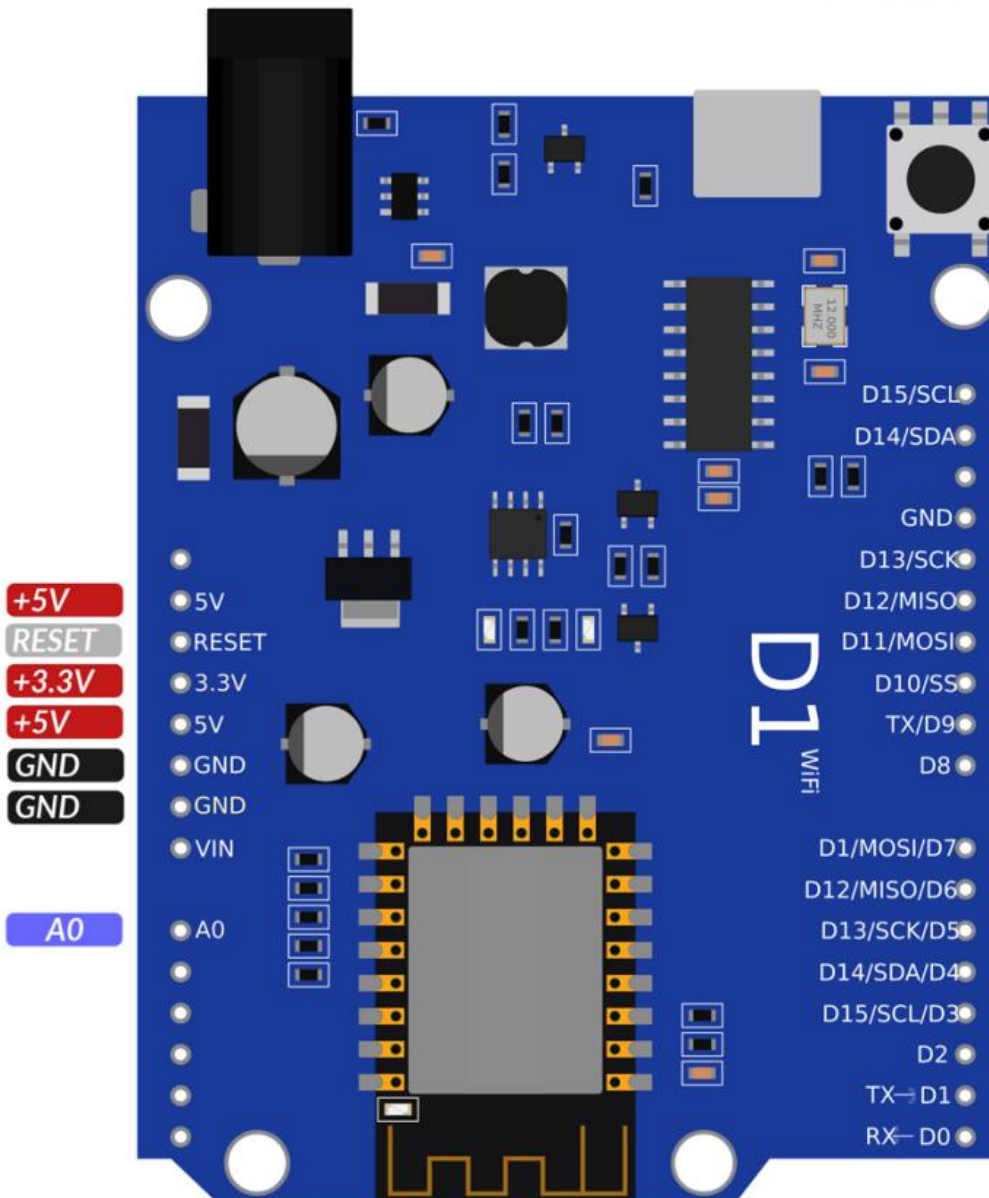


D1 Board NodeMCU ESP8266MOD-12F WiFi

Az-Delivery
Ihr Experte für Mikroelektronik!

Pinout



D15 GPIO5 SCL
D14 GPIO4 SDA

GND

D13 GPIO14 SCK LED_BL
D12 GPIO12 MISO
D11 GPIO13 MOSI
D10 GPIO15 SS
D9 GPIO2 LED_BI
D8 GPIO0

D7 GPIO13 MOSI
D6 GPIO12 MISO
D5 GPIO14 SCK
D4 GPIO4 SDA
D3 GPIO5 SCL
D2 GPIO16
D1 GPIO1 TX
D0 GPIO3 RX

- GPIO port numbers
- Arduino port numbers
- Analog Input 10bits, 0 to 3.3V
- I2C bus (Wire)
- SPI bus
- Serial interfaces
- Built-In LED Connected
- Blue On-board LED